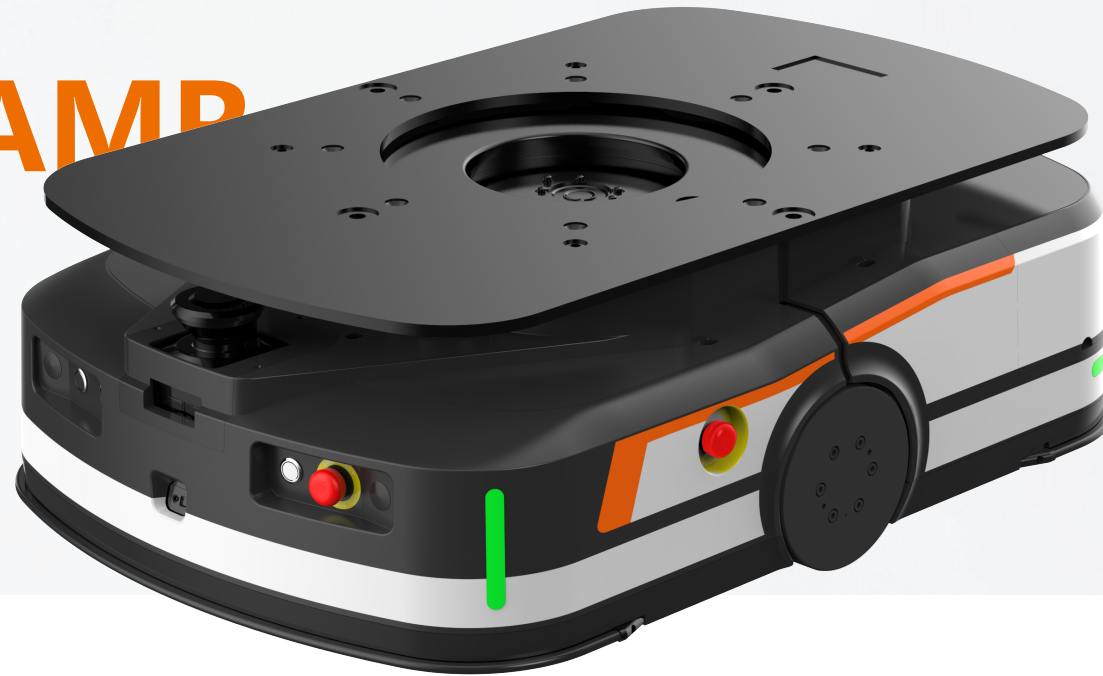


Latent Lifting AMR

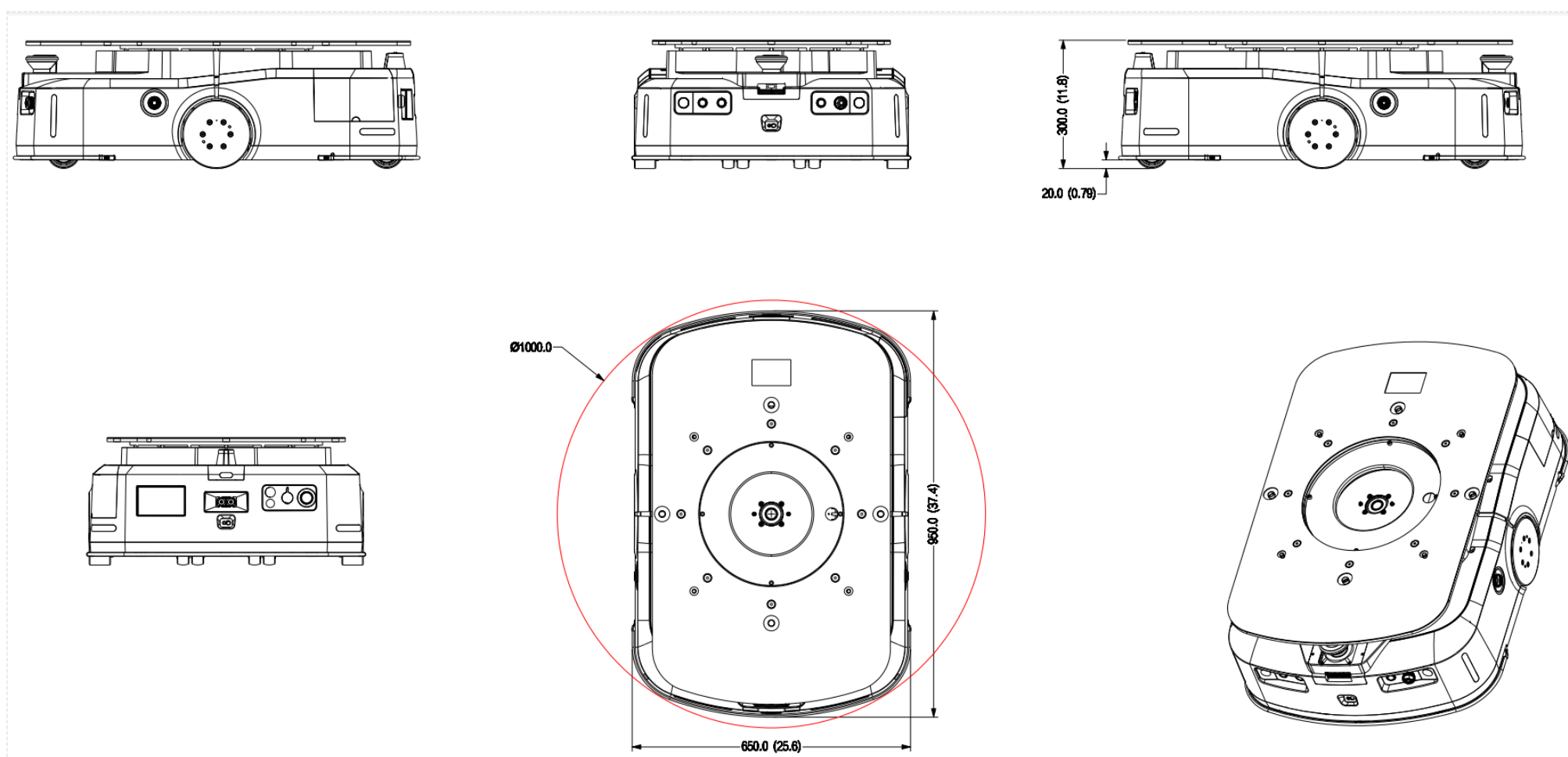
C060D CE



Features

- Support 600 kg load, 2.0m/s no-load speed, and 1.0m/s rated load speed
- Optimize size to adapt to narrower passages and various types of vehicles
- Laser SLAM, visual fusion navigation to meet different requirements
- Multiple obstacle avoidance solutions for enhanced safety
- Support fast battery replacement, no need to wait for charging
- Support Wi-Fi with high bandwidth and low latency for more timely scheduling and command

Dimensions (mm)



Specification

Model		C060D CE
Basic	Product Dimensions	950 mm×650 mm×300 mm
	Rotation Diameter	1000 mm
	Lifting Height	60 mm
	Ground Clearance Height	20 mm
	Lifting Pallet Dimensions	900 mm×560 mm
	Lifting Method	Motor
	Net Weight	172 kg
	Load Capacity	600 kg
	LCD Display	Support
	Touch Screen	Support
	Navigation	QR code/texture/laser SLAM (optional)
	Communication Mode	Wi-Fi
	Drive	Two-wheel speed difference
Performance	Max. Operating Speed	2.0 m/s
	Max. Operating Acceleration	1.0 m/s ²
	Stop Position Accuracy	±10 mm
	Stop Angle Accuracy	±1°
	Climbing Ability	3°/5%
	Obstacle Crossing Height	10 mm
Obstacle Avoidance	Obstacle Avoidance Method	Laser , TOF
	Anti-collision Bar Detection	Front , rear
	Stop Button	Front, rear, left , right
	Sound and Light Alarm	Support
Battery	Battery	Lithium iron phosphate
	Operating Time	7.5 h
	Charging Time	1.5 h
	Charging Mode	Manual/automatic, manually change battery
	Charge and Discharge Cycle Times	1500 times
Operating Environment	Operating Temperature	0°C to 40°C
	Charging Temperature	0°C to 40°C
	Operating Humidity	5% ~ 90% without condensation