

TSW210



TSW210 360° VIEW

UNMANAGED GIGABIT ETHERNET SWITCH WITH SFP

// The TSW210 is an unmanaged industrial switch for centralizing your resources.

// Equipped with 2 SFP ports for long-range fiberoptic communication and 8 Gigabit Ethernet ports with of up to 1000 Mbps download/upload speed.

// Durable, rugged aluminum housing with DIN rail and surface mounting options make the TSW210 perfect for industrial settings.

// 2-pin industrial DC power socket with an input voltage range of 7-57 VDC.



ETHERNET

8 x Gigabit Ethernet with speeds up to 1000 Mbps

PLUG-N-PLAY

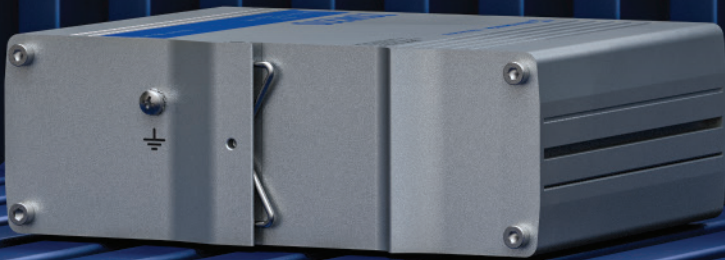
No additional configuration needed

MOUNTING

DIN rail and surface mounting options

SFP

SFP port for long-range Fiber-optic communication



KEY FEATURES

HARDWARE

Power connector	2-pin industrial DC power socket
Input voltage range	7-57 VDC
Power consumption	Idle: 1.03 W, Max: 3.71W
Ethernet	8 x 10/100/1000 Mbps Ethernet ports
SFP	2 x SFP ports for Optical interfaces
Status LEDs	16 x Ethernet, 1 x Power, 2 x SFP activity
Ingress protection rating	IP30
Operating temperature	-40 °C to 75 °C
Housing	Aluminum housing with wall or DIN rail mounting options and grounding capability
Dimensions	132 x 44.2 x 95.1 mm
Weight	500 g
Installation	Desktop, wall or DIN rail mountable (additional kit needed)

PERFORMANCE SPECIFICATIONS

Bandwidth	20 Gbps
Packet buffer	128 KB
Jumbo frame support	9216 bytes
MAC address table size	2K entries
Auto MDI/MDI-X Cable Detection	Yes

FRONT VIEW

BACK VIEW

