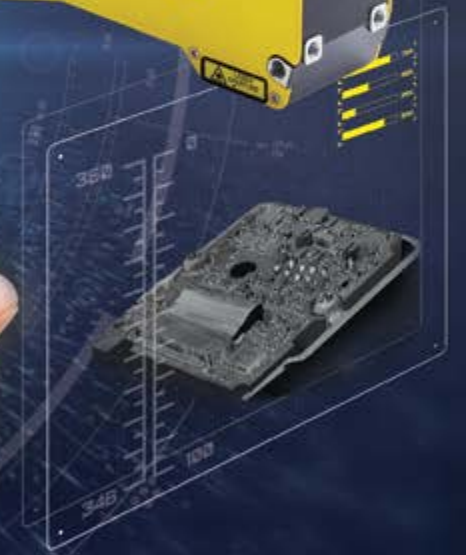
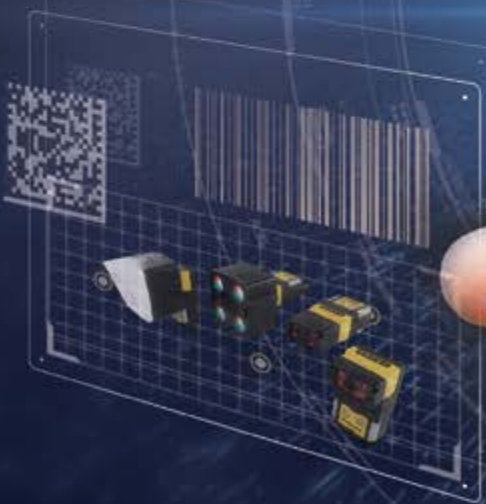


# COGNEX

## BUILD YOUR VISION



# WE MAKE COMPUTERS THAT CAN SEE.

Cognex® is the largest and most recognized global supplier of industrial machine vision.

Cognex systems emulate human eyes and brains. Each system consists of optics, an image sensor, and high-speed electronics that work together to capture an image, then software analyzes that image and makes sense of what's being seen. While this process is second nature to humans, it is a very complex challenge for a computer.

Cognex is focused on solving the toughest problems in machine vision and industrial barcode reading, and we have sold more solutions in these areas than any other company in the world.



# THE GLOBAL LEADER IN MACHINE VISION AND BARCODE READING

For over 40 years, Cognex has helped the world's most innovative companies make their manufacturing and distribution faster, smarter, and more efficient.

Cognex vision and barcode reading systems help improve product quality and track items through each stage of production and distribution. Using data from the billions of digital images captured by Cognex vision systems, companies can monitor, update, and change production plans in real-time across global supply chains. And Cognex is constantly applying new techniques like artificial intelligence and 3D sensing to help companies push production limits beyond what they previously thought possible.

**\$1 BILLION**  
2022 REVENUE

**4,000,000+**  
SYSTEMS SHIPPED

**OVER 42**  
YEARS IN THE BUSINESS

GLOBAL OFFICES IN  
**20+ COUNTRIES**

**500+**  
CHANNEL PARTNERS



# MACHINE VISION

Tens of thousands of applications worldwide inspect billions of products each day, many products that simply could not be manufactured without machine vision technology. Whether verifying the fill levels of soda bottles traveling on a conveyor, reading oil-stained DPM codes on automotive parts, or positioning touch screens on smartphones to micron-level accuracy, machine vision technology performs highly-detailed tasks on high-speed production lines.

Cognex machine vision products help companies:

- **Optimize quality**
- **Minimize waste**
- **Maximize throughput**



# AI TECHNOLOGY

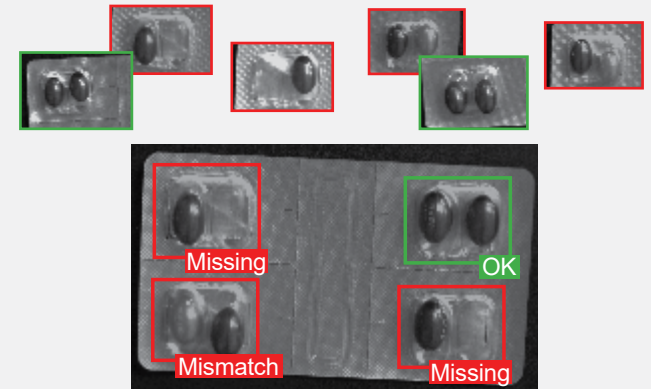
Cognex AI-based solutions learn to spot patterns and anomalies from example images to solve complicated tasks and provide consistency and speed that aren't possible with manual inspection.



## Edge learning

Subset of AI in which processing takes place

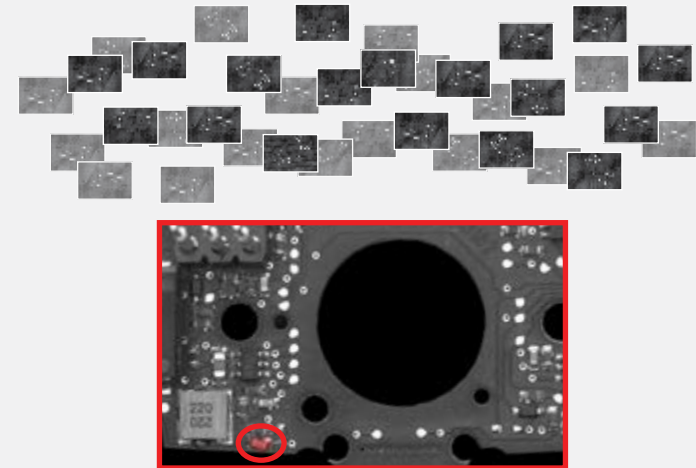
on-device, or "at the edge," using a pre-trained set of algorithms. This technology is simple to setup, requiring smaller image sets and shorter training and validation periods than traditional deep learning.



## Deep learning

Designed to automate complex or highly

customized applications. This technology enables users to analyze vast image sets quickly and efficiently, while accurately differentiating between acceptable and unacceptable anomalies.



# 2D VISION SENSORS AND SYSTEMS

## In-Sight 3800 Series

Designed for fast-paced applications, In-Sight 3800 delivers a fully integrated solution for manufacturing automation. Embedded with the latest vision technologies, this powerful system offers high speed, high flexibility, and high resolution, allowing users to maximize throughput, scale their solution, and run more accurate inspections.



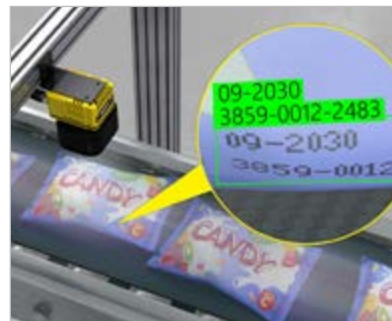
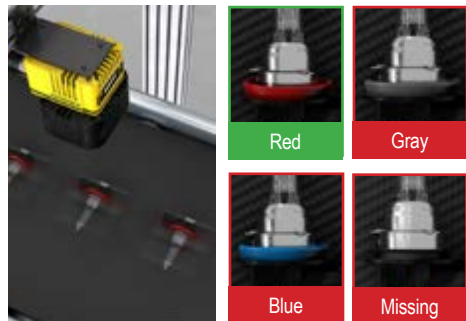
### TOOL SET



### RESOLUTION



### FEATURES



## In-Sight 2800 Series

Combines edge learning technology with traditional rule-based vision tools to solve a range of error-proofing tasks. From presence/absence detection to sortation and character reading, this fully integrated vision system offers an easy-to-use solution for automating inspections.



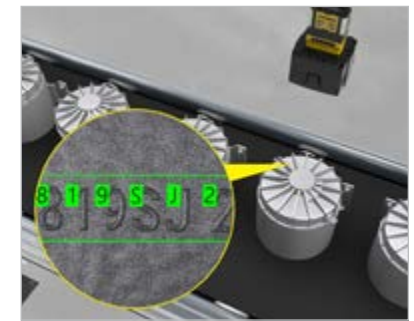
### TOOL SET



### RESOLUTION



### FEATURES



## In-Sight D900 Series

The In-Sight D900 vision system leverages advanced AI-based tools to solve challenging OCR, assembly verification, and defect detection tasks. Processing takes place on-device, which eliminates the need for a PC, simplifying application deployment.



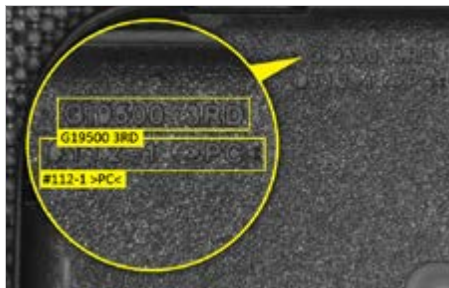
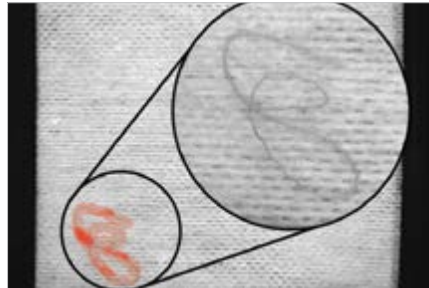
### TOOL SET



### RESOLUTION

Up to 5MP

### FEATURES



## In-Sight 9000 Series

Rugged, ultra-high-resolution standalone vision system equipped with a full suite of vision tools solves high-accuracy part location, measurement, and inspection applications. Line scan and area scan image acquisition options are available for imaging large, continuously moving or stationary objects.



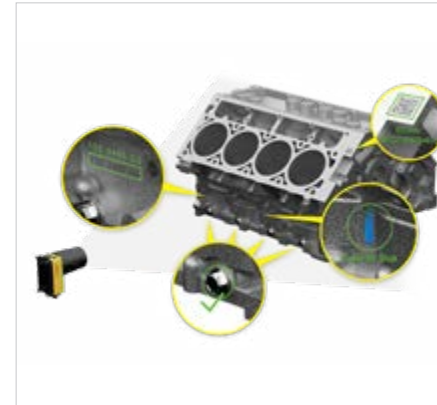
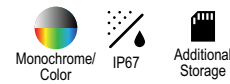
### TOOL SET



### RESOLUTION

Area Scan: Up to 12MP  
Line Scan: Up to 32MP

### FEATURES



## In-Sight 8000 Series

Ultra-compact standalone vision system delivers industry-leading vision performance in the micro form factor of a typical GigE vision camera.



TOOL SET	RESOLUTION	AVAILABLE FEATURES
	Up to 5MP	Monochrome/Color Micro PoE HDR+

## In-Sight 7000 Series

Combines modular integrated lighting with powerful vision tools in a compact footprint to deliver fast, accurate inspections on space-constrained production lines.



TOOL SET	RESOLUTION	FEATURES
	Up to 5MP	Monochrome/Color IP67 HDR+ Autofocus

## In-Sight 2000 Series

Ideal for solving simple pass/fail inspections, these vision sensors offer high value, ease of use, and the flexibility to adapt to virtually any production line environment.



TOOL SET	RESOLUTION	FEATURES
	3.75 $\mu\text{m}^2$ pixel size	Monochrome/Color Autofocus IP65

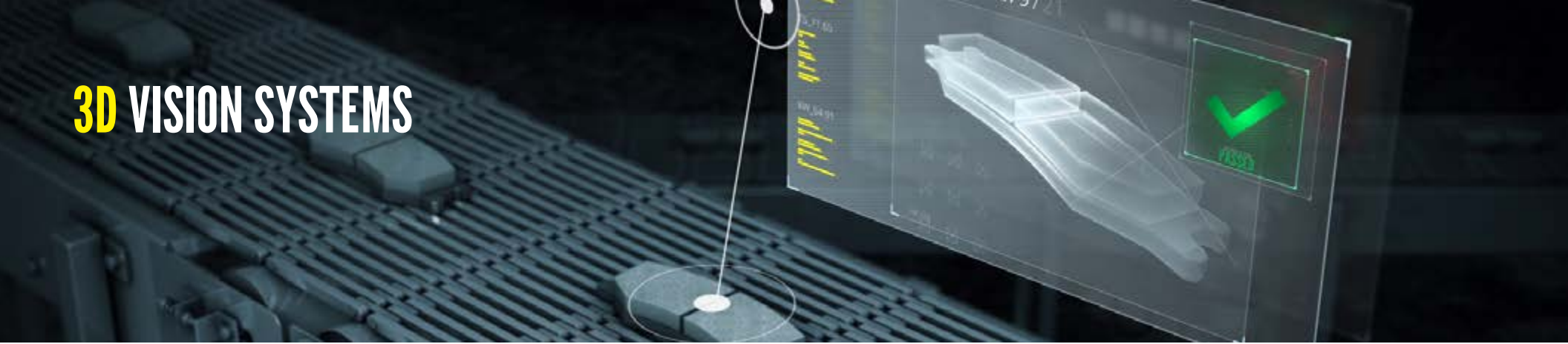
# IN-SIGHT VISION SOFTWARE



All In-Sight products are configured with In-Sight Vision Suite software, which offers two development options — EasyBuilder® and spreadsheet. With point-and-click training, the intuitive EasyBuilder interface is ideal for setting up simple or common jobs, while the robust spreadsheet environment provides additional power and flexibility for advanced or customized applications.

In-Sight Vision Suite also offers the widest range of built-in communication protocols that interface directly to any PLC, robot, or HMI on the factory network.

# 3D VISION SYSTEMS



Whether performing a single profile measurement or scanning an entire surface, Cognex has the most powerful and robust 3D vision tools. Manufacturers in all industries trust Cognex technology to deliver high accuracy surface measurements that go beyond the capabilities of 2D vision technology.

## In-Sight 3D-L4000 Series

A unique vision system combining 3D laser displacement technology with a high-performance smart camera. It allows factory engineers to quickly, accurately, and cost effectively solve a wide variety of inspections thanks to a comprehensive suite of true 3D vision tools, easy setup, and speckle-free blue laser optics.

TOOL SET



3D RESOLUTION

 **2000 points**

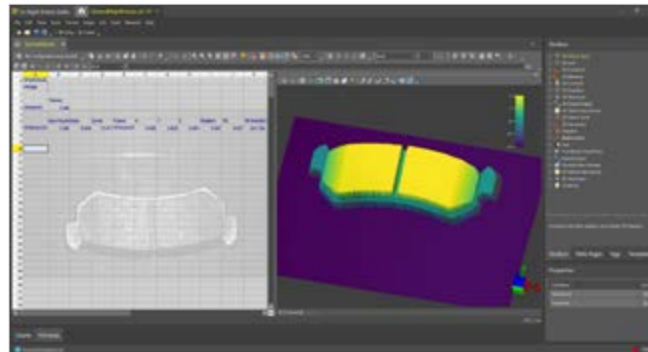
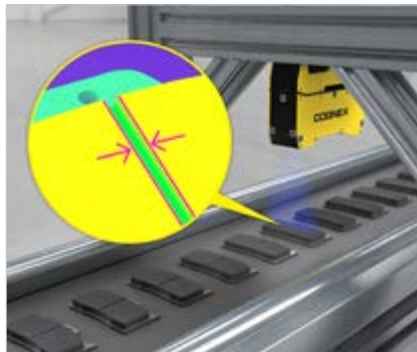
FEATURES



 ESD-Safe

 Factory Calibrated

 IP65





## 3D-A5000 Series

State-of-the-art area scan camera captures high-resolution 3D point cloud images in less time than alternative methods. Using unique 3D imaging technology, it solves challenging assembly verification, in-line metrology, and robotic guidance applications.

### TOOL SET



### 3D RESOLUTION

 **1.5 million points**

### FEATURES



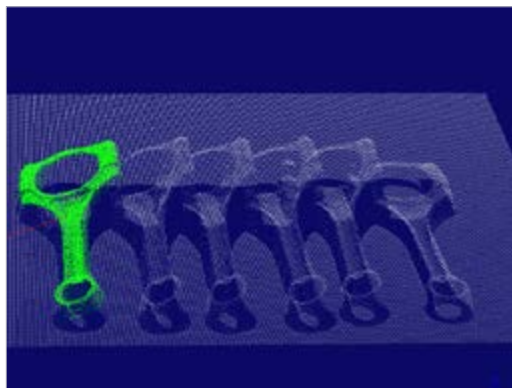
LightBurst



Factory Calibrated



IP65




## 3D-L4000 with VisionPro

Powerful laser displacement sensor with PC-based development environment performs fast, accurate 3D inspections, measurements, and OCR character reading. Equipped with industry-leading 3D vision tools and delivers results in real-world units.

### TOOL SET



### 3D RESOLUTION

 **960-1920 points**

### FEATURES



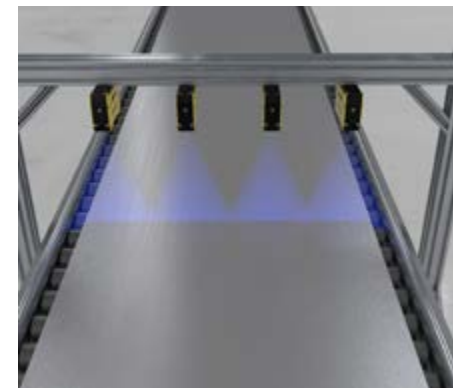
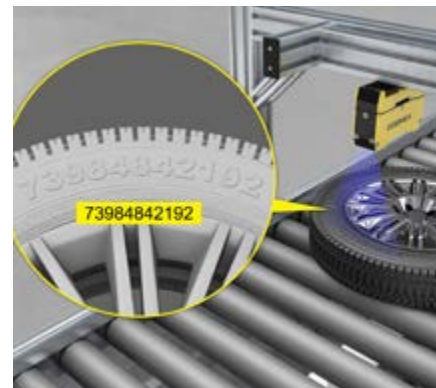
Factory Calibrated



ESD-Safe



IP65

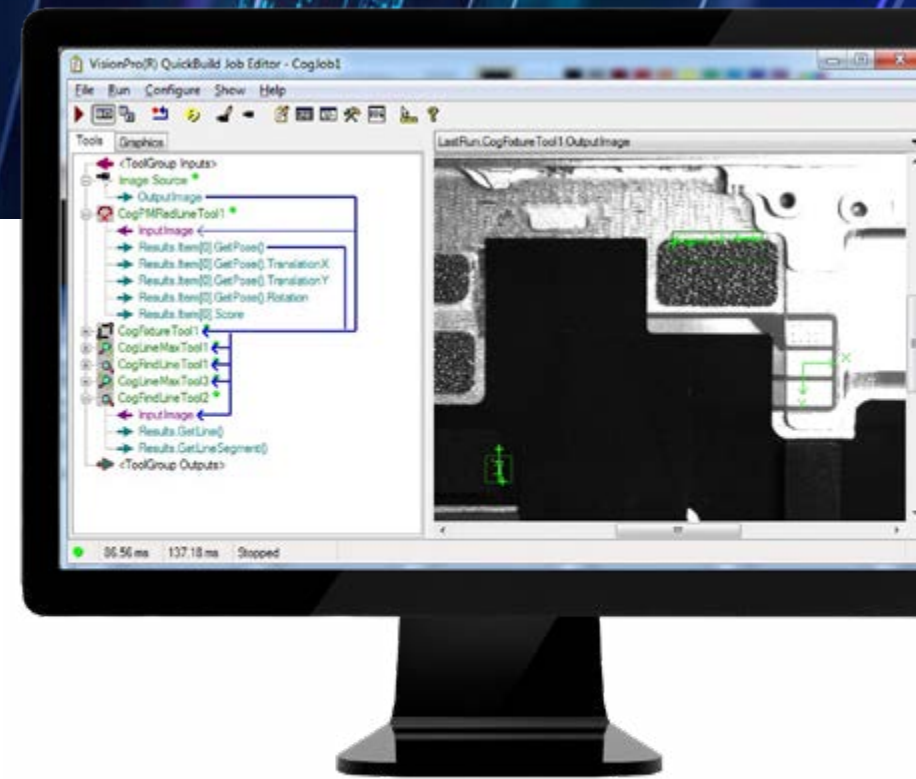


# VISION SOFTWARE

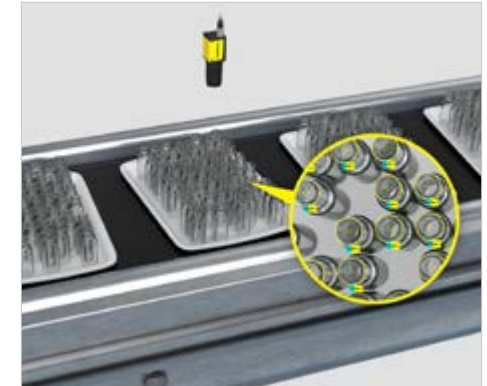
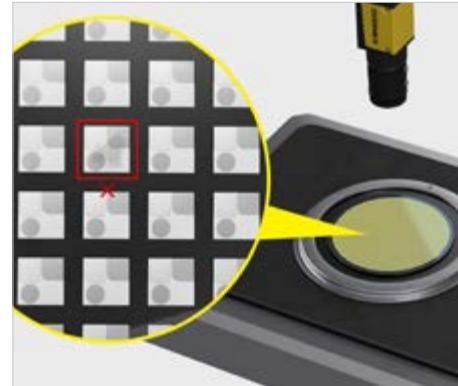
## VisionPro

VisionPro® 10 is a PC-based software that combines best-in-class vision technologies in a graphical programming environment. Powerful enough to solve the most challenging vision tasks, it enables rapid deployment of highly-customizable applications, from geometric object location and inspection to identification, measurement, and alignment. With a future-oriented design that includes rule-based tools and AI capabilities, this flexible software supports both current and future vision needs.

### TOOL SET



## Extensive library of AI- and rule-based tools tackle your toughest vision challenges



# BARCODE READING

Nearly every product uses a 1D or 2D barcode to automate and simplify identification and data capture. The basic process in reading codes is to 1) illuminate the code, 2) locate the code, and 3) extract the data. Organizations must be able to read codes quickly and accurately for maximum efficiency and throughput.

Cognex image-based barcode readers decode 1D and 2D codes, from printed labels to the hardest to read direct part mark (DPM) codes, and deliver industry-leading read rates. Advanced technology, modular options, and easy setup help to reduce costs, optimize performance, increase throughput, and control traceability.



# FIXED-MOUNT BARCODE READERS

## DataMan 470 Series

Premium reader with multi-core processing power and advanced imaging technology for complex, high-throughput 1D and 2D code applications.



POWER	RESOLUTION	CONNECTIVITY	SYMBOLOLOGIES
7.5X	5MP	Serial GigaBit	1D 2D
FEATURES			
Hotbars	PowerGrid	High Speed Liquid Lens	C
Laser Aimer	SD	Modular	HDR HDR+ EI

## DataMan 370 Series

Delivers superior read performance for the broadest range of applications, including multi-code, multi-symbology applications.



POWER	RESOLUTION	CONNECTIVITY	SYMBOLOLOGIES
5X	5MP	Serial GigaBit	1D 2D
FEATURES			
Hotbars	PowerGrid	High Speed Liquid Lens	C
Laser Aimer	SD	Modular	HDR EI

## DataMan 280 Series

Premium decoding technology in a compact form factor.

### POWER



### RESOLUTION



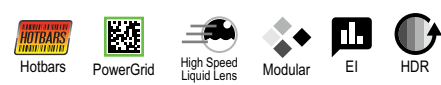
### CONNECTIVITY



### SYMBOLOLOGIES



### FEATURES



## DataMan 70 Series

Compact design ideal for reading 1D and 2D label-based codes in tight application spaces.

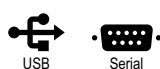
### POWER



### RESOLUTION



### CONNECTIVITY



### SYMBOLOLOGIES



### FEATURES



## DataMan 580 Fixed-Mount Barcode Reader for Tunnel Applications

Enables greater throughput while maintaining high read-rates and short gaps between packages on high-speed lines utilizing a 9 MP imager and Cognex's 1D/2D QuickSort™ algorithm.



# HANDHELD BARCODE READERS



## DataMan 8700DX

Offers cutting-edge performance and operator feedback on the most challenging DPM and label-based codes while withstanding harsh oils, dirt, and water.

### RESOLUTION

 1.6 MP

### CONNECTIVITY

 Ethernet  Serial  USB  Bluetooth

### SYMBOLOLOGIES



### FEATURES



## DataMan 8700DQ

Decodes well-marked DPM codes with IP67-rated housing and an OLED display screen for easy setup and use.

## DataMan 8700LX

Decodes well-marked 1D and 2D label-based codes, with an OLED display screen for easy setup and use.

## DataMan 8700HD

Decodes well-marked 1D and 2D label-based codes as small as 2 mil in size.



### RESOLUTION

 1.6 MP

### CONNECTIVITY

 Ethernet  Serial  USB  Bluetooth

### SYMBOLOLOGIES



### FEATURES

 Hotbars  PowerGrid  OLED Display

## Cognex Mobile Barcode Software Development Kit (SDK)

The Cognex Mobile Barcode SDK is an easy-to-use software for creating and deploying mobile barcode reading applications. The SDK offers a unified solution, allowing users to maintain all mobile devices across their entire organization from a single platform. It can be used with any smartphone or tablet with a built-in camera, and even embedded systems.

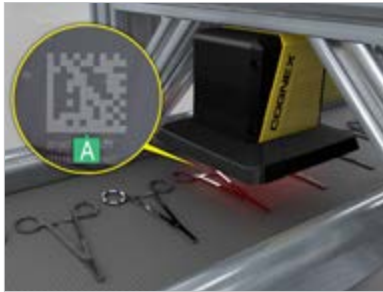


# BARCODE VERIFIERS

Barcode verification is the process of grading the quality of barcodes to globally accepted standards. Cognex barcode verification technology ensures the readability and compliance of codes and provides detailed summary reports.

## DataMan 475V Series Inline Verifier

Grades 1D, 2D, and DPM codes from a fixed position on the production line.



Label and DPM models

## In-Sight 7905V Series Verifier

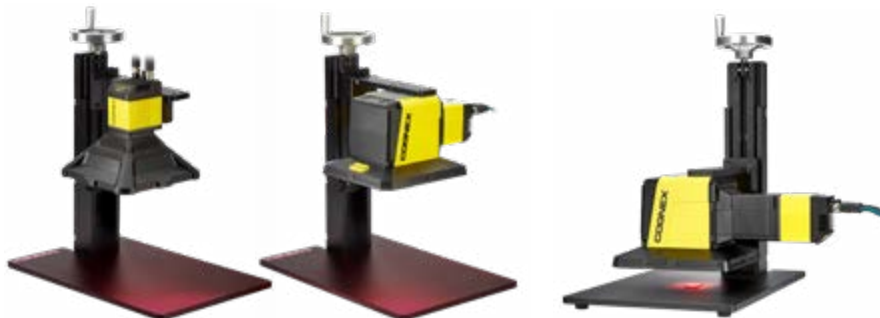
Combines powerful vision and verification technology to perform multiple tasks at once including grading barcode quality, reading text, and verifying code placement on parts.



Label and DPM models

## DataMan 475VS Series Offline Verifier

Grades 1D, 2D, and DPM codes as small as 1 mil in size on a wide range of parts with an easy-to-use adjustable height stand.



Label

DPM

HD

## DataMan 8072V Series Handheld Verifier

Grades the most difficult direct part mark (DPM) codes with 30/45/90-degree angle lighting options.



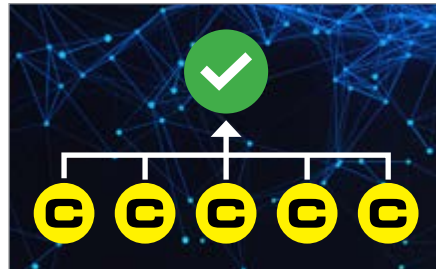
# COGNEX EDGE INTELLIGENCE



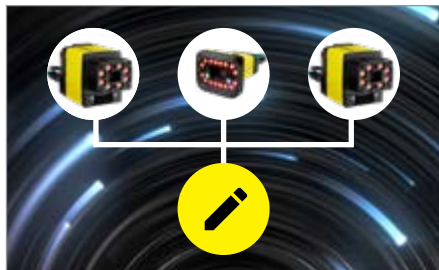
The Cognex Edge Intelligence (EI) platform provides visibility into what is happening on your line, transforming big data into smart data for greater efficiency. EI is fully integrated with select Cognex products and logistics tunnels to streamline device management. Users can access visualization and diagnostics tools to identify and resolve issues quickly.



Connect via web browser



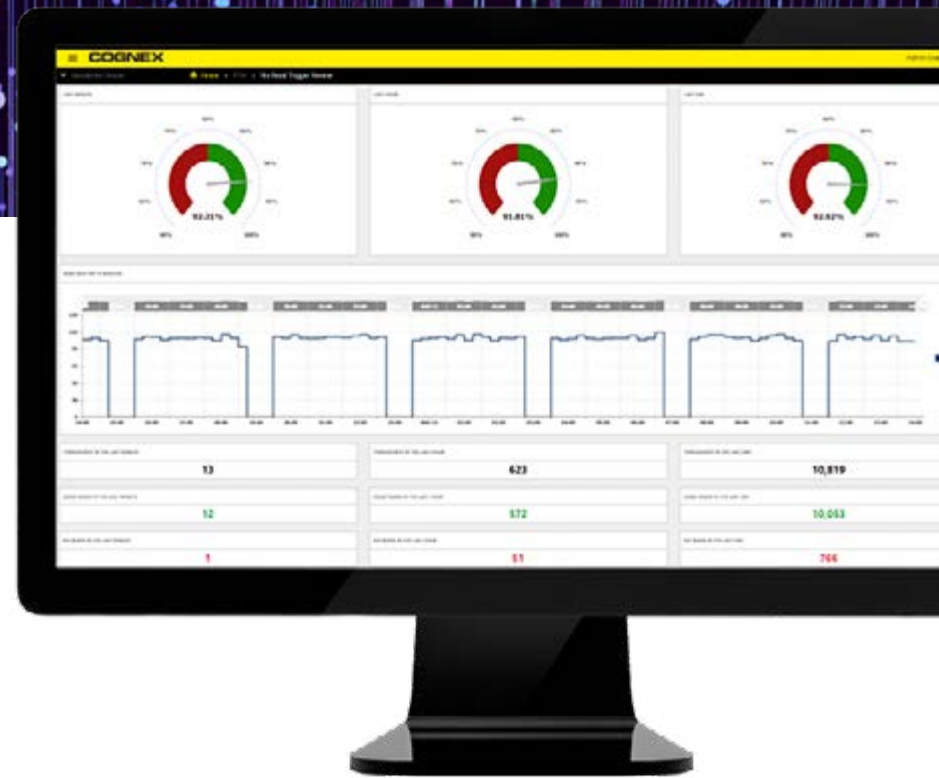
Automatically discover and subscribe to Cognex products



Configure multiple devices at once



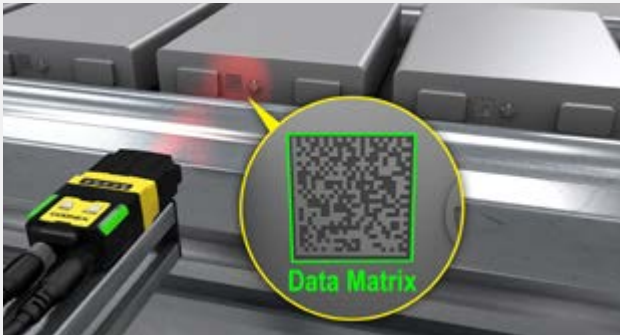
Securely store and share data



Performance dashboards, read rate trends, setup, commissioning, and calibration tools

# THE MOST INDUSTRY EXPERIENCE

We serve hundreds of different markets. Here are some of the largest and fastest-growing industries for machine vision and industrial barcode reading.



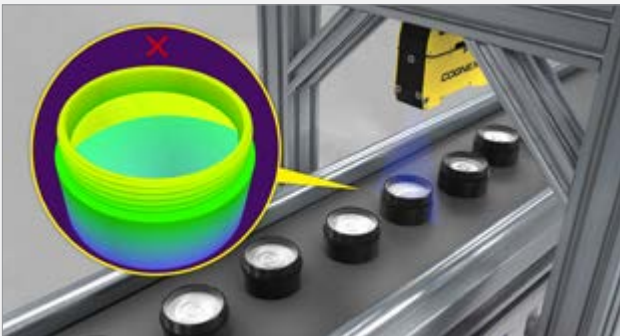
Automotive



Consumer electronics



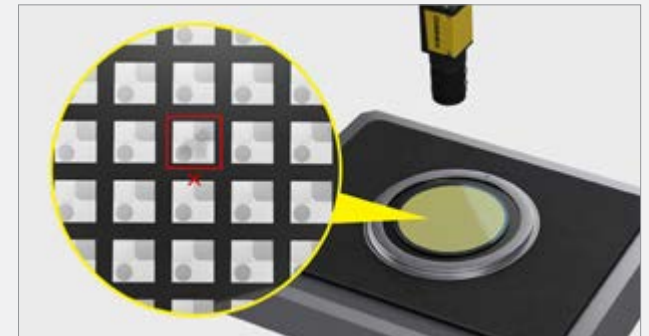
Food & beverage



Consumer products



Logistics



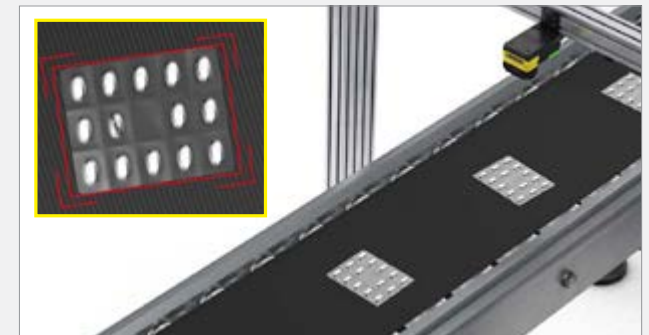
Electronics



Life sciences



Packaging



Pharmaceutical

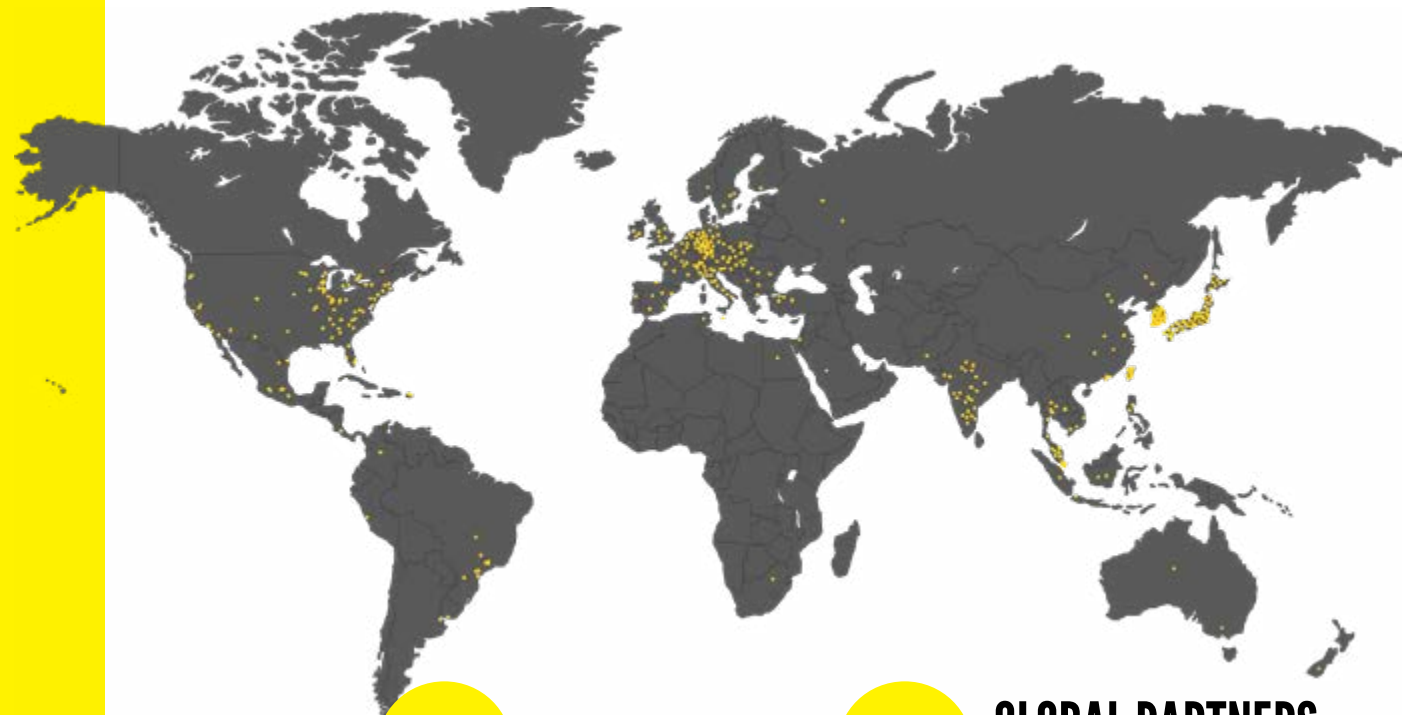
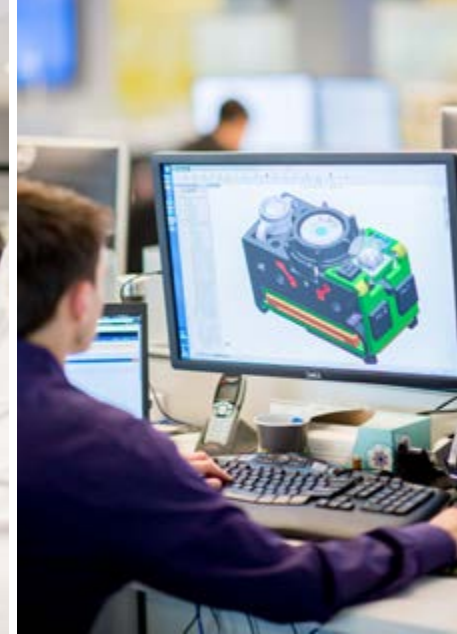


# COGNEX GLOBAL SERVICES

Cognex serves an international customer base from offices located throughout the Americas, Europe, and Asia and through a global network of highly-trained partners, system integrators, and distributors.

From development to deployment, Cognex is there to get your vision systems up and running as fast as possible. Whether you're considering machine vision for the first time or are already an expert user, Cognex global services provide the expertise to help your organization succeed.

[cognex.com/support/cognex-services](http://cognex.com/support/cognex-services)



OFFICES IN **20+** COUNTRIES

**500+** GLOBAL PARTNERS  
IN 30 COUNTRIES



## TECHNICAL SUPPORT

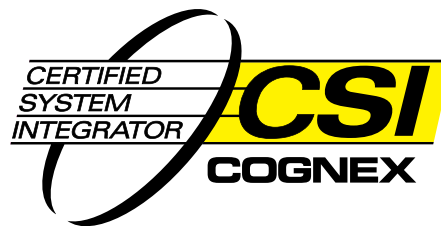
All Cognex products come with complimentary technical support during and after installation from experienced vision engineers that you can access by phone, email, and online knowledge database. Cognex engineers can remotely connect to your system to help solve your problem. Cognex vision systems come with a one-year limited warranty and are covered by our Hot Swap Program, which guarantees shipment of a permanent replacement system within 2 business days of a reported failure.

[cognex.com/support](https://cognex.com/support)

## THE MOST EXTENSIVE VISION NETWORK

Around the globe, wherever you find manufacturing, you can find a Cognex representative! Our extensive network of Cognex certified partners consist of the most experienced Automation Service Providers (ASPs) and Certified System Integrators (CSIs) in the industry.

Our ASPs are locally-based vision suppliers offering a wide range of factory automation products, support and services to Cognex customers around the world. Additionally, when it comes to more complex automation installations that require highly skilled resources, our CSIs offer an extensive range of services including completely customized automation solutions to integration into pre-existing solutions.





## COGNEX TRAINING

We want to make you the most effective vision professional at your organization. That's why Cognex offers a variety of training options dedicated to increasing organizational expertise and optimizing your manufacturing processes. Through our global training program, we deliver a variety of courses for beginners to advanced users that range from the fundamentals of machine vision to real-world applications for complex tools.

### CUSTOMIZED, ANYTIME

For groups of six or more, Cognex classes are available at your facility so that your team can work and learn together in your operating environment. For convenience, the Cognex online training portal lets you access on-demand training videos of Cognex courses, participate in virtual classes and tutorials, and view application examples.

By combining key training classes and system integration services into training service packages, Cognex helps focus and accelerate your learning.

[cognex.com/training](https://cognex.com/training)



**10,000+**  
ATTENDEES IN 2022



**1000+**  
WORLDWIDE  
CLASSES IN 2022



**18**  
DIFFERENT LANGUAGES

# WHAT DOES CULTURE MEAN AT COGNEX?

## WORK HARD

We are passionate about our work. We work hard because we are empowered to make a difference.

## PLAY HARD

Jump out of an airplane with our CEO? Get in a paint fight with your coworkers? Launch pumpkins from a catapult for prizes? Or just drink beer with friends at an after-work social. Cognex goes all out to reward working hard with creative opportunities to play hard.

## MOVE FAST

The sooner we test that new idea, the sooner we can bring it to market to help our customers meet their goals. Staying nimble keeps work interesting, and keeps Cognex innovating.



# COGNEX

WWW.COGNEX.COM

## COGNEX

Companies around the world rely on Cognex vision and barcode reading solutions to optimize quality, drive down costs and control traceability.

**Corporate Headquarters One Vision Drive Natick, MA 01760 USA**

### Regional Sales Offices

#### Americas

North America +1 844 999 2469  
Brazil +55 11 4210 3919  
Mexico +800 733 4116

#### Europe

Austria +43 800 28 16 32  
Belgium +32 289 370 75  
Czechia +420 800 023 519  
France +33 1 76 54 93 18  
Germany +49 721 958 8052  
Hungary +36 800 80291

Ireland +353 21 421 7500  
Italy +39 02 3057 8196  
Netherlands +31 207 941 398  
Poland +48 717 121 086  
Romania +40 741 041 272  
Spain +34 93 299 28 14  
Sweden +46 21 14 55 88  
Switzerland +41 445 788 877  
Turkey +90 216 900 1696  
United Kingdom +44 121 29 65 163

#### Asia-Pacific

Australia +61 2 7202 6910  
China +86 21 2279 9455

India +91 7305 040397  
Indonesia +62 21 3076 1792  
Japan +81 3 5977 5400  
Korea +82 2 539 9047  
Malaysia +6019 916 5532  
New Zealand +64 9 802 0555  
Phillipines +63 2 8539 3990  
Singapore +65 3158 3322  
Taiwan +886 02 7703 2848  
Thailand +66 6 3230 9998  
Vietnam +84 98 2405167

© Copyright 2023, Cognex Corporation. All information in this document is subject to change without notice. All Rights Reserved. Cognex, In-Sight, EasyBuilder, VisionPro, and DataMan are registered trademarks of Cognex Corporation. 1D/2D QuickSort is a trademark of Cognex Corporation. All other trademarks are property of their respective owners. Lit. No. CPG-EN-04-2023