



Hall Technologies • 1234 Lakeshore Dr Suite #150 Coppell, TX 75019 • halltechav.com

HT-GEMINI

4K 6 Multiformat Input Extender Switch with USB Extension for Soft Codec

API Command List

Version: 1.0



HT-GEMINI-RX



HT-GEMINI-TX

COMMAND LIST TABLE OF CONTENTS

Connecting to the HT-GEMINI	3
IP Address	3
Enabling Telent Client	3
Logging in Via Command Prompt	4
Terminology & API Commands Overview	5
Terminology	5
API Commands	6

Connecting to the HT-GEMINI

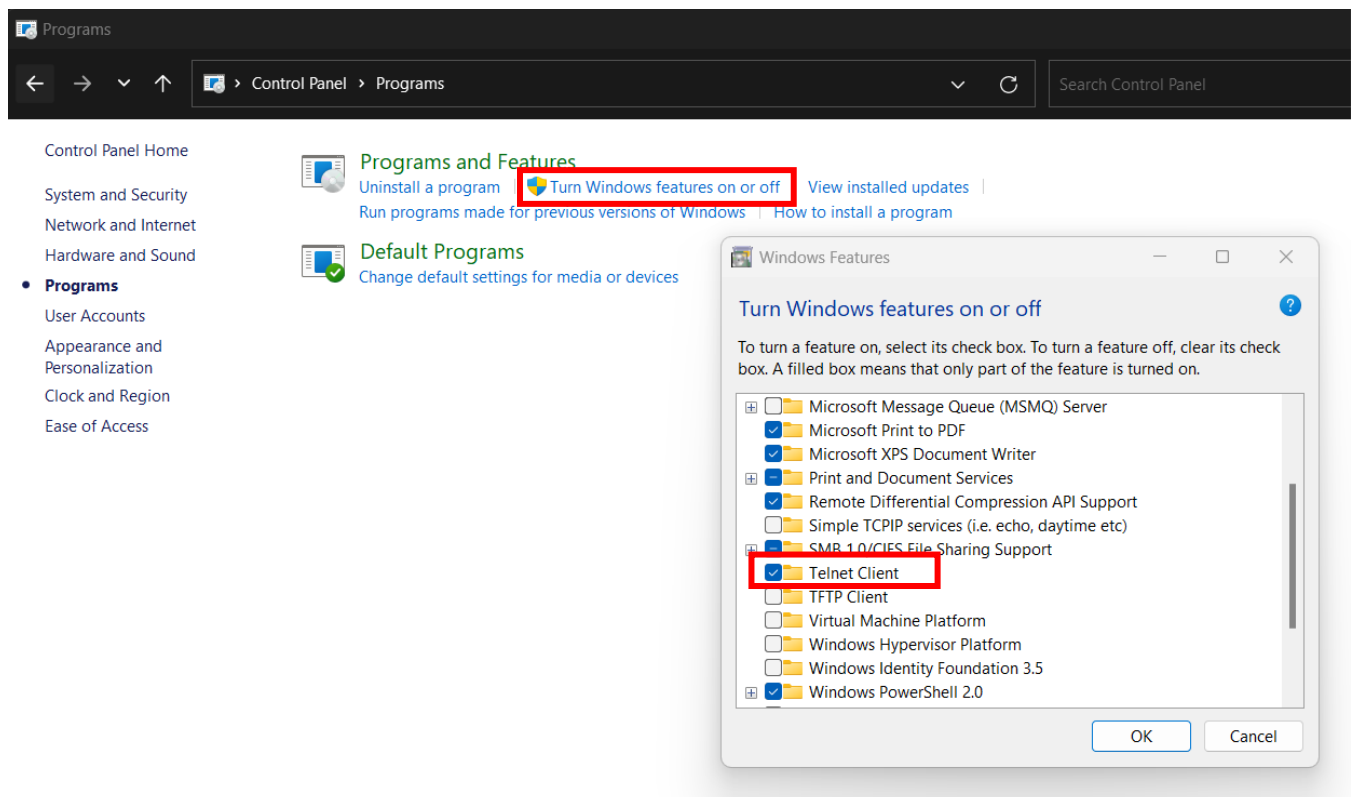
IP ADDRESS

To connect to and communicate with the HT-GEMINI, the controlling device needs to be on the same network. If needed, change the IP address on your PC to be in the same IP range and same subnet as the HT-GEMINI. You can find out the IP address of the HT-GEMINI by looking in the bottom right corner of the Guide Screen (you will need to connect the HT-GEMINI to a display).

ENABLING TELNET CLIENT

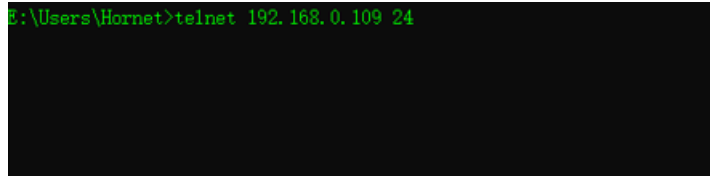
Before logging in to IP controller via command-line interface, make sure that Telnet Client is enabled. By default, Telnet Client is disabled in Windows OS. To turn on Telnet Client, do as follows.

1. Choose **Start > Control Panel > Programs**
2. In the **Programs and Features** area, click **Turn Windows features on or off**.
3. In the **Windows Features** window, select **Telnet Client** check box.



LOGGING IN VIA COMMAND-LINE INTERFACE

1. Choose **Start > Run**
2. In the Run dialog box, enter **cmd** and then click **OK**.
3. Enter **telnet 192.168.0.109 23** if the device's IP address is 192.168.0.109 and then press **Enter**. (The 23 on the end changes the port communication to 23).



```
E:\Users\Hornet>telnet 192.168.0.109 24
```

4. The device will display a **#** as the command prompt. The device is now ready to execute the API commands.

Terminology & API Commands Overview

TERMINOLOGY

The terminology used in the API command's description is listed as follows:

- **Device:** the unit being controlled
- **AirPlay Mirroring:** A screen mirroring approach developed by Apple and is supported by many Apple devices such as MacBooks, iPads, and iPhones.
- **Miracast:** A screen mirroring approach developed by Wi-Fi alliance and is supported by all Android devices and Windows PCs.
- **BYOD Source:** AirPlay and Miracast are BYOD solutions.
- **Hardware Source:** The physical hardware interface on the device, such as HDMI or USB Type-C.
- **Software Source:** Certain devices can display video content from a USB camera.

API Commands

Command	Parameter(s)	Description
SET AUTOSW_FN prm	<i>{on off}</i>	Enables (on) or disables (off) the Auto Switch function.
GET AUTOSW_FN	-	Returns the status of the Auto Switch function.
SET KEY_FN prm	<i>{on off}</i>	Enables (on) or disables (off) the button key lock.
GET KEY_FN	-	Returns the status of the Key Lock function.
SET SW in out	<i>In = {VGA, DP, TXHDMI, USBC, RXHDBT, RXHDMI1, RXHDMI2} Out = {RX, TX}</i>	Set the desired input to the output.
SET SW out in	<i>In = {VGA, DP, TXHDMI, USBC, RXHDBT, RXHDMI1, RXHDMI2} Out = {RX, TX}</i>	Set the desired output to the input.
GET MP out	<i>Out = {RX, TX}</i>	Returns the input mapping to the TX or RX.
GET SIG_S in	<i>In = {VGA, DP, TXHDMI, USBC, RXHDBT, RXHDMI1, RXHDMI2}</i>	Returns input signal status.
SET CEC_FN prm	<i>{on off}</i>	Enables (on) or disables (off) the CEC function.
SET DISPAUTO_FN prm	<i>{on off}</i>	Enables (on) or disables (off) the automatic display control.
GET DISPAUTO_FN	-	Returns the display control status.
SET AUTOCEC_D prm	<i>{1, 2, 3, ..., }</i>	Sets the delay time to turn off the display when no signal is present (in minutes). Default is 2 minutes.
SET UART_B prm	<i>{9600 19200 38400 57600 115200}</i>	Sets the baud rate for RS232 communication.
GET UART_B	-	Returns the baud rate setting.
SET UART_T prm	<i>{string hex}</i>	Sets the UART command type.
GET UART_T	-	Returns the UART command type.
SET UART_STR prm1 prm2	<i>Prm1 = {poweron poweroff} Prm2 = {xxxxxxxxxx}</i>	Sets the command for powering on/off the display. (The actual command for prm2 depends on the display being controlled.)
SET UART_E prm	<i>{null cr lf crlf}</i>	Sets the desired end character of the command (depending on the display requirements).

Command	Parameter(s)	Description
GET UART_E	-	Returns the setting for the end character.
SET UART_HEX prm1 hex1 hex2 hex3	<i>Prm1 = {poweron / poweroff}</i> <i>Hex1, hex2 = {xx xx xx }</i>	Sets the UART command with HEX format.
SET RELAY_M prm	<i>{Latch Momentary}</i>	Sets the mode of the relay.
GET RELAY_M	-	Returns the mode setting of the relay.
SET MOM_T prm	<i>{1 ~ 10}</i>	Sets the momentary time (in seconds) when the relay mode is set to momentary. Default is 3s.
GET MOM_T	-	Returns the momentary time setting.
SET PROSCR_LR prm	<i>{lowering raising}</i>	Sets the relay for raising or lowering a projection screen.
SET EDID in prm	<i>In = {VGA, DP, TXHDMI, USBC, RXHDMI1, RXHDMI2}</i> <i>Prm = {EDID}</i>	Sets the EDID for a specified input. VGA Input: 1920x1200@60Hz 1920x1080@60Hz 1680x1050@60Hz 1600x900@60Hz 1440x900@60Hz 1360x768@60Hz 1280x768@60Hz 1024x768@60Hz HDMI/DP/USB-C Input: 3840x2160@30Hz 1920x1200@60Hz 1920x1080@60Hz 1680x1050@60Hz 1600x900@60Hz 1440x900@60Hz 1360x768@60Hz 1280x768@60Hz 1024x768@60Hz
GET EDID in	<i>In = {VGA, DP, TXHDMI, USBC, RXHDMI1, RXHDMI2}</i>	Returns the EDID setting for the specified input.
SET HDCP_S in prm	<i>In = {TXHDMI, USBC, RXHDMI1, RXHDMI2}</i> <i>Prm = {on off}</i>	Enables (on) or disables (off) the HDCP for the specified input.
GET HDCP_S in	<i>{TXHDMI, USBC, RXHDMI1, RXHDMI2}</i> -	Returns the HDCP setting for the specified input.
SYSR	-	Performs a factory reset.
GET IPADDR	-	Returns the IP Address.
APP	-	Performs a system reboot.
GET VER	-	Returns the firmware version
GET VER ALL	-	Returns firmware version of both RX and TX.
UPG prm	<i>{Master Slave}</i>	Upgrade the module.
HELP	-	Returns a list of all available API commands.



© Copyright 2022. Hall Technologies
All rights reserved.

1234 Lakeshore Drive, Suite #150, Coppell, TX 75019
halltechav.com / support@halltechav.com
(714)641-6607