

This quick start guide provides basic instructions for setting up SEADA SolarWall Micro video wall controllers (SWMicro). For additional information about how to use the controllers, please see the User Guide, which is available on the SEADA website (<https://seada.co.uk/downloads>).

Note:

1. Do not fix the device to any surface which is a heat source to avoid overheating.
2. Do not cover the surface or ventilation grills of the device to avoid overheating.

1. Verify the package contents

Please verify the package contents:

- | | |
|----------------------------------|----|
| 1. SWMicro video wall controller | x1 |
| 2. Power Cable | x1 |
| 3. Quick Start Manual | x1 |
| 4. Serial Cable | x1 |
| 5. Network Cable | x1 |
| 6. Download Guide Card | x1 |

2. Set up the SWMicro

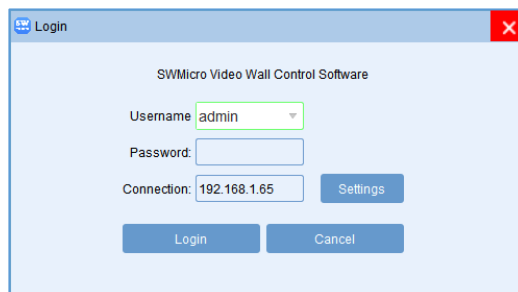
1. Connect the power cable to the unit and power it up.
2. Connect the outputs to the screens of the video wall.
3. Connect all the video sources to the inputs of the device.

3. Run the software on control PC and connect through LAN

Users can run the SWMicro.exe software directly without installation. Software can be downloaded from SEADA website (<https://seada.co.uk/downloads>).

Double click the SWMicro software to get the Dialog box on the right.

The default connection of SWMicro to the control PC will be '**LAN connection**'.



LAN connection

Connect SWMicro with a CAT cable to the control PC (cable included in the package).

The default static IP address for SWMicro is '**192.168.1.65**'. Users need to change the IP address of the control PC to static IP address and the same network segment as SWMicro at TCP/IPv4 in '**Ethernet Properties**'.

- **IP address:** any address between 192.168.1.2 and 192.168.1.254 except the address which has been taken by SWMicro.
- **Subnet Mask:** 255.255.255.0
- **Default Gateway:** 192.168.1.1

When logging in for the first time, the User Admin ID is **admin** with the password **admin**.

By clicking '**Login**', SWMicro will be connected automatically. If not, please refer to '**Troubleshooting**' section in the user manual available on the SEADA website for more information.

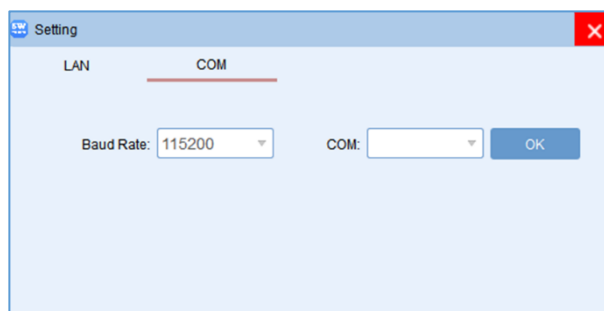
4. Connect through Serial Port

By clicking 'Settings', users can also choose to control SWMicro via Serial Port.

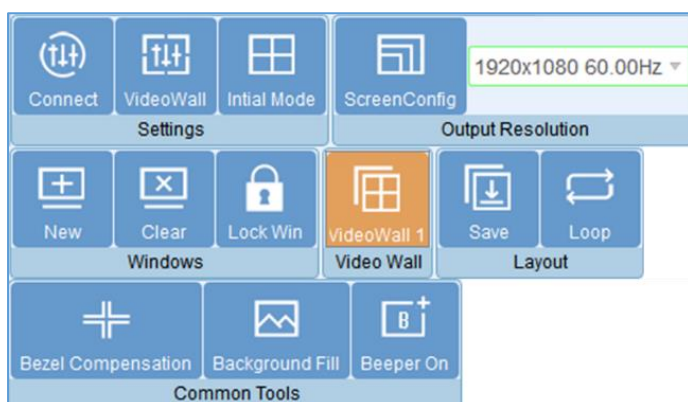
Serial Port connection

Connect the SWMicro with a serial cable to the control PC (cable included in the package).

- Choose 'COM'.
- Choose the correct Serial Port.
- Click 'OK' and 'Login' to continue.

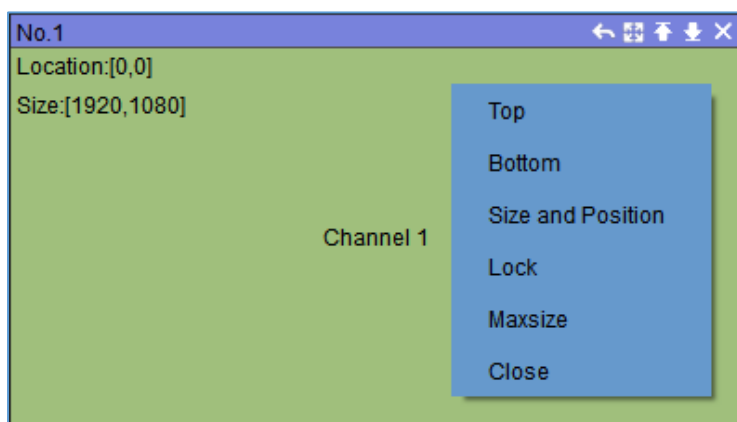


5. Set up the video wall



Once connected, SWMicro will load the settings used from last time. The default setting for the new unit out of package is 2x4/3x4/4x4 video wall with input 1 across the screens depending upon the model type. All outputs are set at resolution of 1920x1080@60hz. The function of each tab on the main window for setting up a video wall will be:

- **VideoWall:** Set up the video wall layout.
- **Initial Mode:** Set up the initial splicing of each output screen or all output screens.
- **ScreenConfig:** Add and modify customised output screen resolutions.
- **New:** Set up windows on the screen according to the initial mode. Two other ways can open a new window onto video wall as well by drag & drop and drawing in the video wall display area.
- **Clear:** Close all existing windows on the video wall.
- **Lock Win:** Lock all windows in the video wall display area to avoid accidental adjustment.
- **Save/Loop:** Save/Load pre-set video wall layouts and loop saved layouts on the output screen.
- **Bezel Compensation:** Correct the bezels of the output screen.
- **Background Fill:** Change the background colour of the output screen.



Right click on the video wall, users can use the tools in 'Dropdown menu' to set up each window individually. Some of these functions can be accessed using the tool bar on the right-top of each window.

- **Top:** Bring the selected window to top of all windows.
- **Bottom:** Send the selected window to bottom of other windows.
- **Size and Position:** Modify the size

and position of the selected window.

- **Lock:** Lock the selected window to avoid accidental adjustment.
- **Maxsize:** Maximise the size of the selected window to the whole video wall.
- **Close:** Close the selected window.