

13

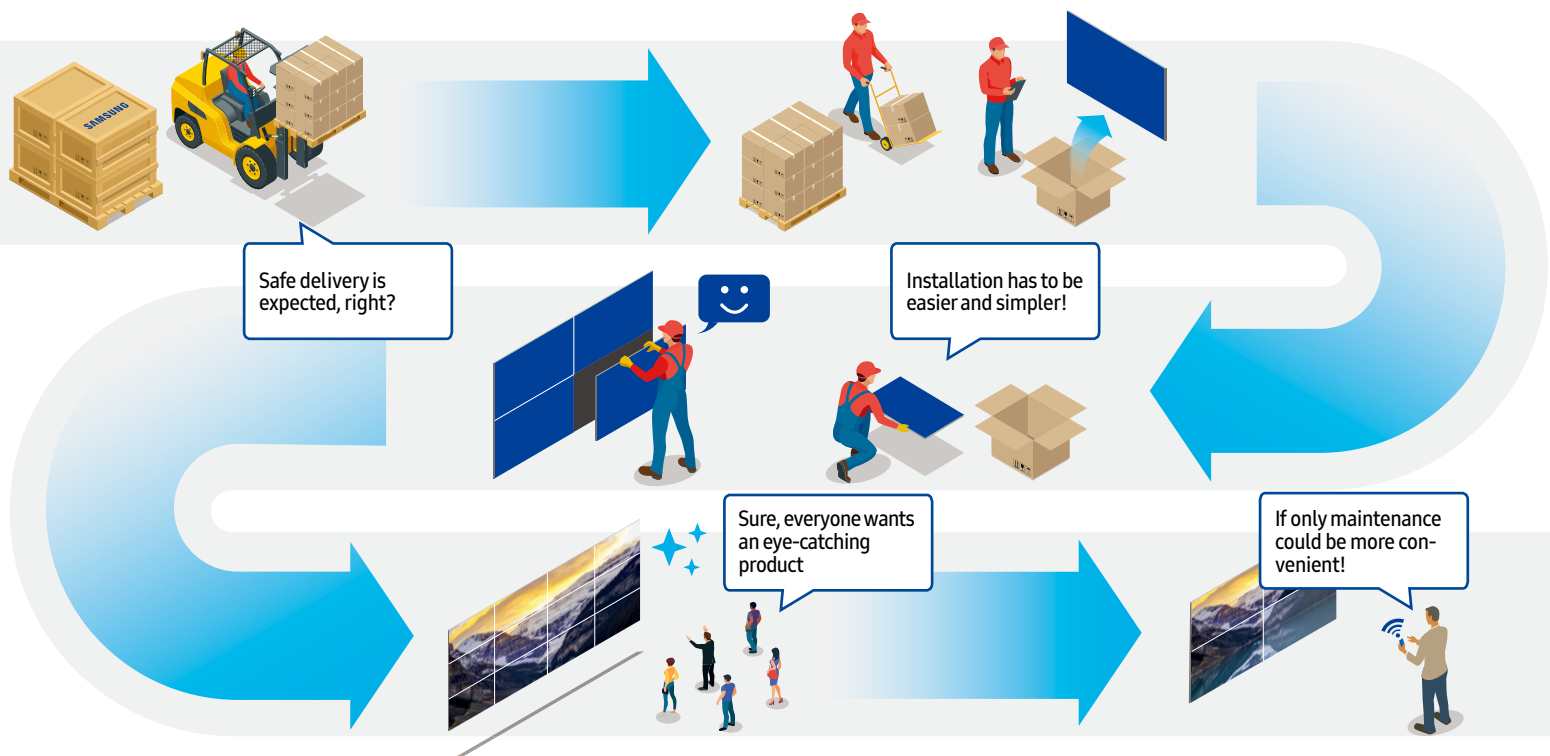
MUST-HAVES when you buy a video wall

Video walls are important communication tools for many businesses, but the process of purchasing and installing the right display has not always been easy.

Delivery, installation and calibration all bring potential hazards and complications. From the moment the display leaves the factory, it's exposed to potential damage from shipment and delivery and even unboxing. Once delivered, the thickness of the bezel and weight of the displays can make it difficult to install. Even after displays are in place, calibration can bring a whole new set of challenges, making it difficult and time-consuming to achieve perfect uniformity.

Samsung's VHR-R displays are designed to address the most common pain points with delivering, designing, installing and calibrating so you can easily create the beautiful video walls your business needs with the world's leading display technology.

It's the time to meet Samsung VHR-R video wall!

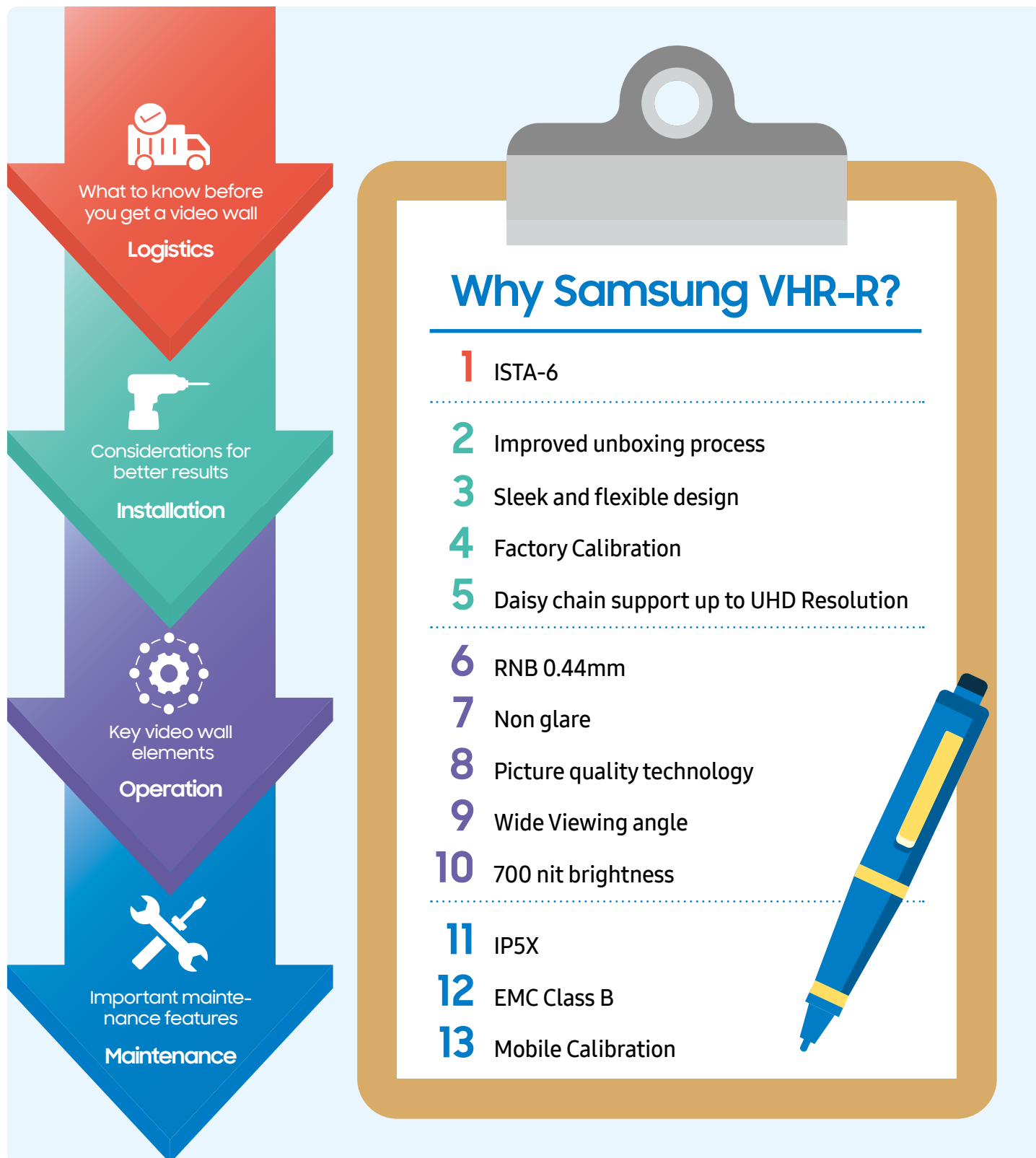


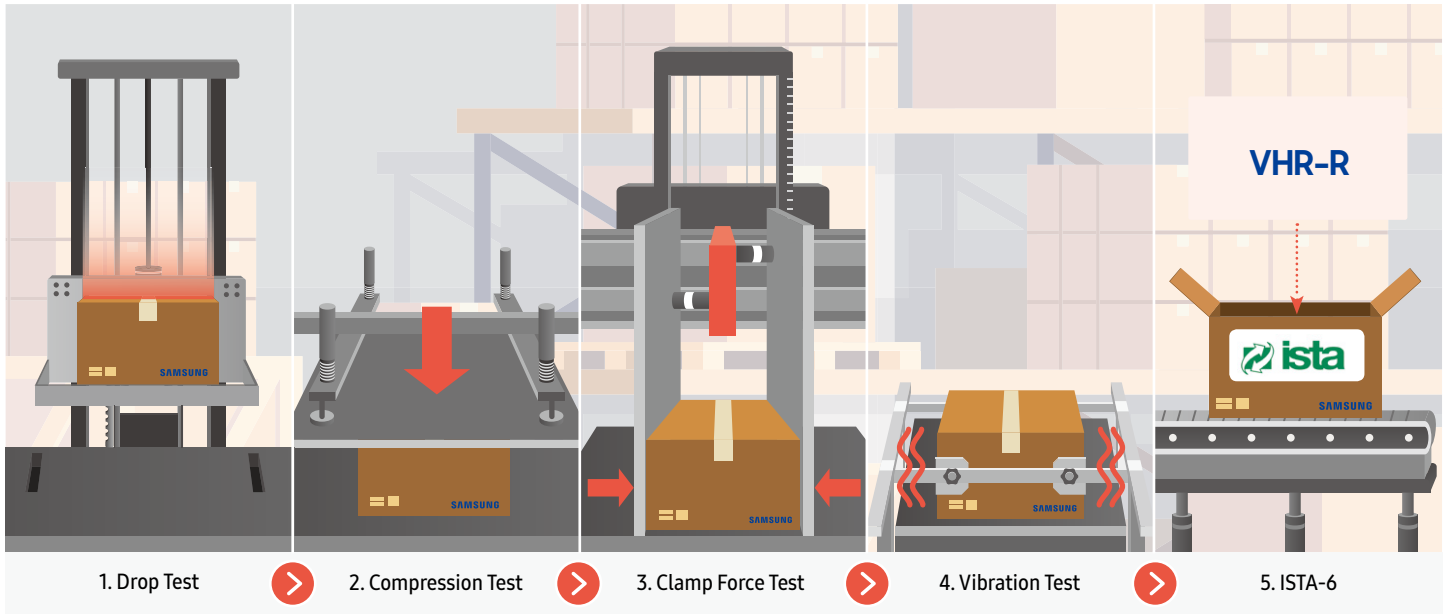
Perfect solutions for video wall

Delivered in certified-safe packaging, VHR-R features a flexible display design and built-in factory calibration to simplify installation. Exceptionally narrow bezels and Samsung's powerful picture quality technology ensure the display is impactful from every angle, no matter where it's installed. Mobile calibration and IPX5-certification enable businesses to deliver powerful messages for years to come. From product delivery to installation, ongoing operation and maintenance, VHR-R displays are guaranteed to deliver captivating content for the entire lifespan of the product.

From logistics to maintenance, and every step in between, VHR-R video wall displays deliver an outstanding result with the most important features.

If you're considering installing a video wall, be sure to consider these 13 key features.



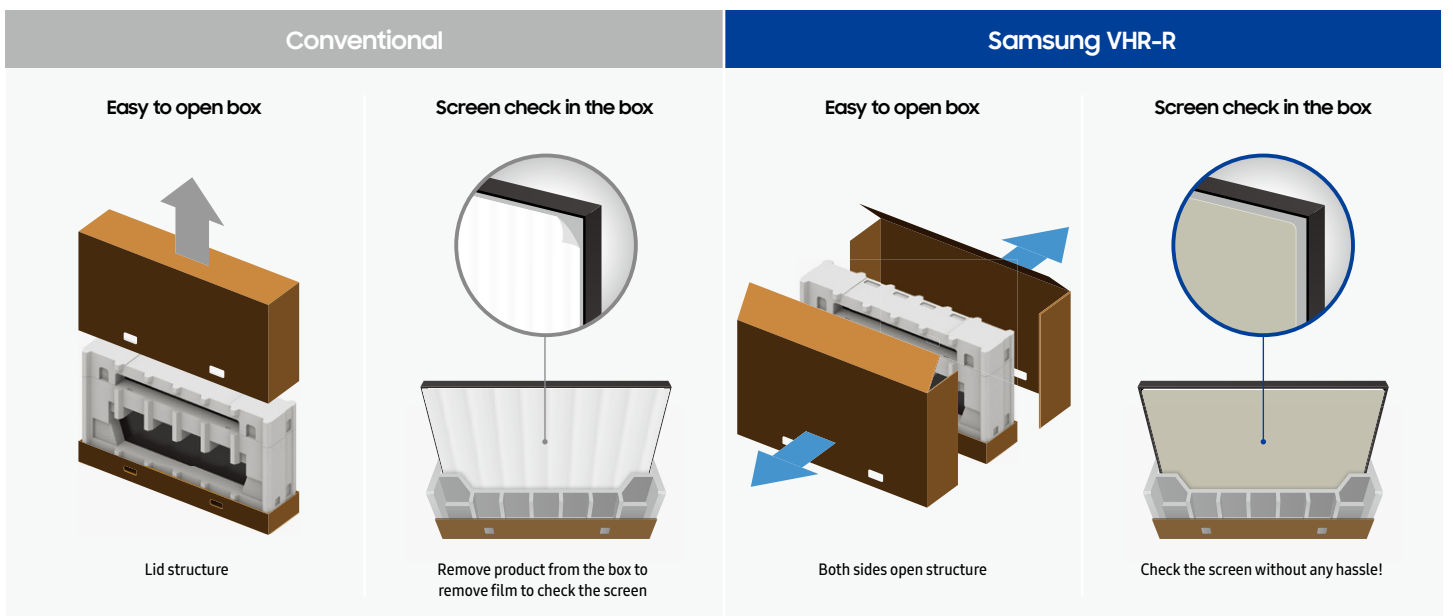


1 ISTA-6

VHR-R displays are delivered in specialized packaging which has passed a rigorous 4-step test in an International Safe Transit Association-certified laboratory, to ensure the display has been protected from any potential damage during transportation and delivery. This means from the moment it arrives, you can be confident the display is ready to go, straight out the box.

*ISTA: International Safe Transit Association

Installation



2 Improved unboxing process

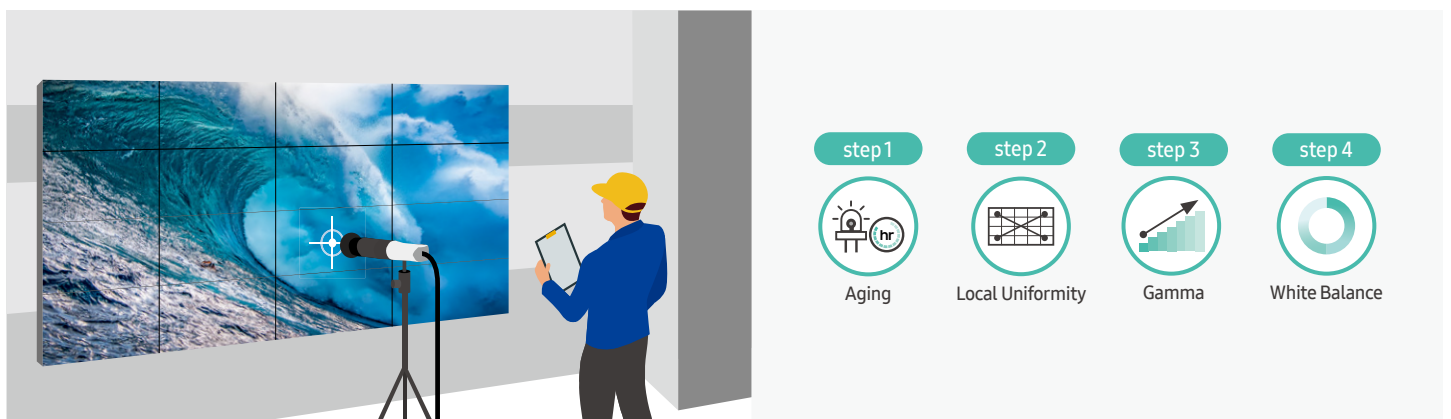
As simple as it may seem, the process of removing a display from its box may actually cause additional damage. VHR-R display boxes have been specially designed to open in a way that helps minimize any additional damage during unboxing.

Installation



3 Sleek and flexible design

With an elevated, modern design aesthetic, and an ultra-slim cabinet depth of less than 70 mm, VHR-R displays provide flexibility in installation, freeing up space and ensuring video walls can be placed in the most impactful location possible for the user. The thoughtful design of the display not only saves space, but also creates a clean and modern look, elevating the ambiance of everything from retail stores to hotels and more.



4 Factory Calibration

Samsung displays undergo a rigorous multi-step factory calibration process to ensure uniform brightness and color expression across all display cabinets. To maintain consistent brightness and color uniformity over time, or after any required maintenance, users can also utilize Samsung's Color Expert Pro, a powerful free software program.



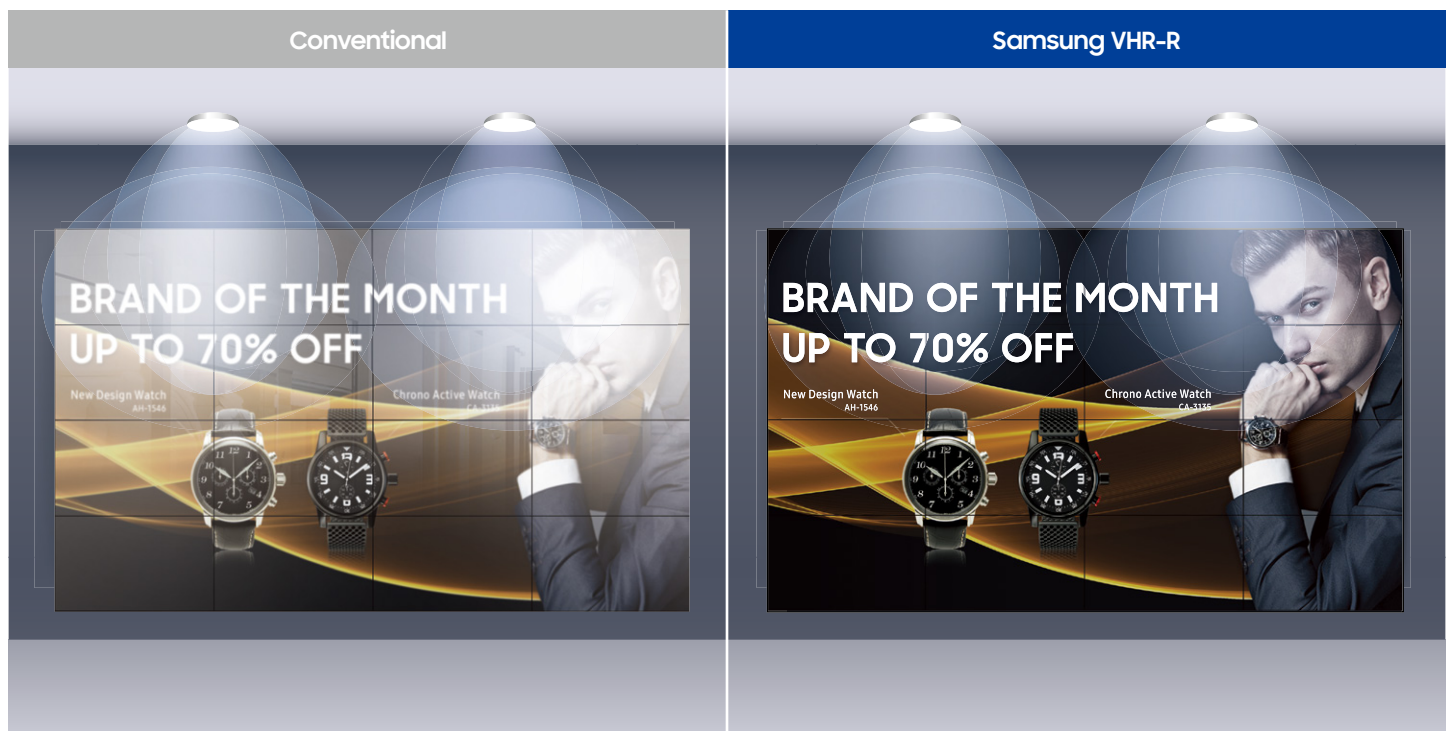
5 Daisy chain support up to UHD Resolution

VHR-R displays take advantage of Samsung's years of technology development to provide a captivating UHD viewing experience, utilizing the industry's best engineering techniques. With daisy chain design using DisplayPort 1.2 and HDMI ports, installers can create displays that project UHD content across multiple screens without the need for UHD splitters or graphics cards.



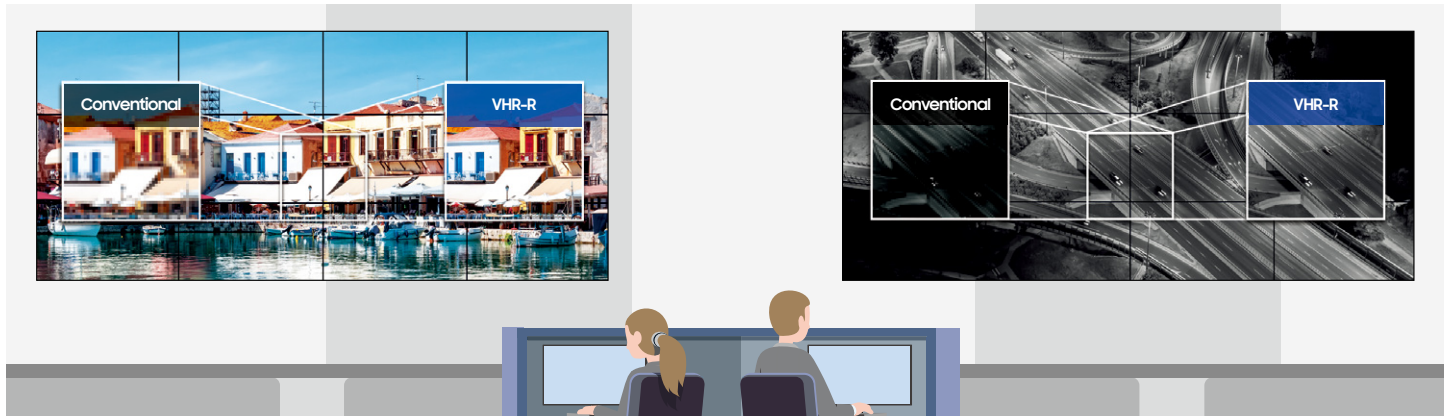
6 RNB 0.44mm

Exceptionally narrow 0.44 mm even bezels eliminate the unnecessary distraction of image distortion for viewers. The more immersive viewing experience provided by drastically narrower bezels ensures business content is always front and center, creating a more captivating and elevated experience for viewers.



7 Non glare

Conventional video wall displays can appear washed out in many environments due to the wide range of ambient or direct light in the room. VHR-R displays feature specialized non-glare panels ensuring better visibility regardless of any light in the room.



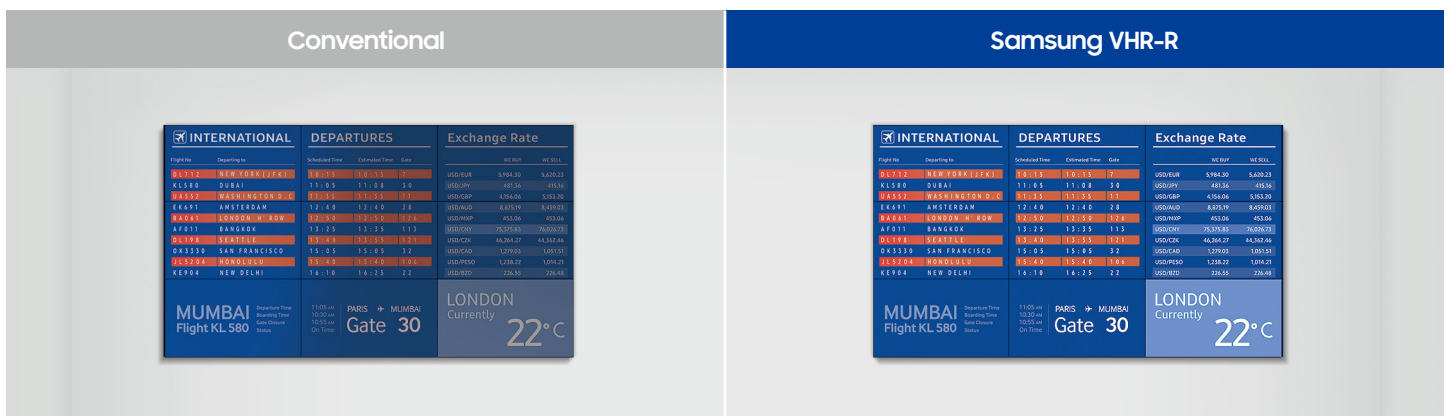
8 Picture quality technology

Samsung is a recognized industry leader in picture quality with image technology that delivers clear and vibrant images in any location. VHR-R displays feature Picture Enhancer mode which adjusts the gamma curve for improved color saturation and contrast. Black Equalizer mode also helps bring the details out in dark images.



9 Wide Viewing angle

Video walls are often used in scenarios where displays must be seen by many people, all viewing from different angles. VHR-R displays ensure all viewers can get clear and accurate information regardless of the video wall layout or the viewer location thanks to the wide viewing angles of the display.



10 700 nit brightness

From delivering clear information in commuter terminals to grabbing the attention of potential customers, a video wall's brilliance is key to conveying the desired information clearly. With 700 nit brightness, VHR-R displays can deliver highly visible content regardless of ambient light or the display location.



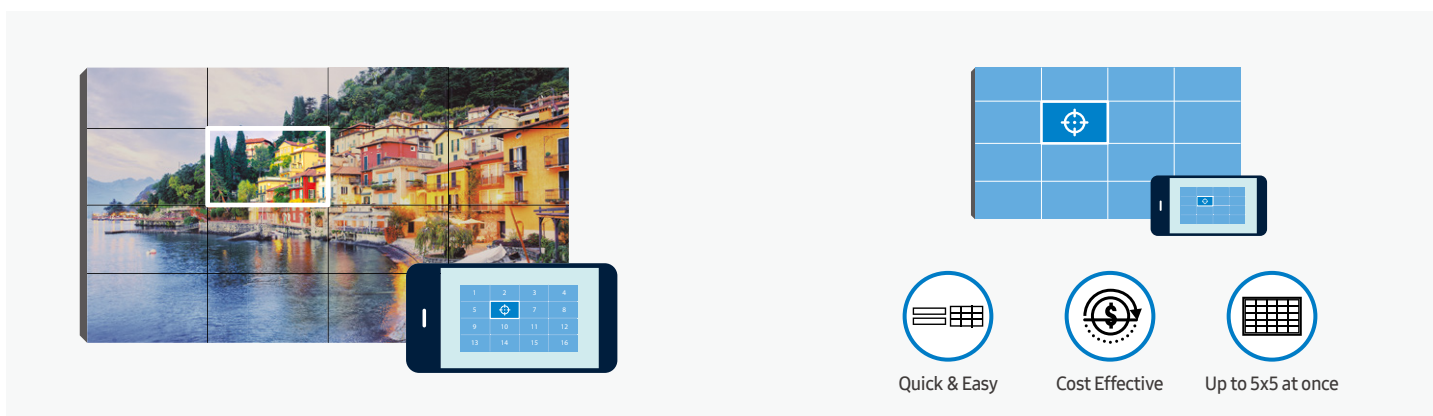
11 IP5X

VHR-R displays' IP5X certification ensures businesses will have displays that stand the test of time. Resistant to both dust and water, the displays are certified to consistently operate in a wide variety of environments and conditions.



12 EMC Class B

VHR-R displays are also EMC class B compliant, meaning each component meets strict standards for electromagnetic wave emissions. Users can rest assured displays provide a safe environment for all viewers.



13 Mobile Calibration

VHR-R displays are compatible with Samsung's Color Expert Pro Mobile solution which provides a simplified calibration process utilizing a smartphone camera. Without the need for any additional equipment, users can adjust white balance and ensure individual cabinets are delivering consistent images.

Specifications

Model			VH55R-R	
Panel	Diagonal Size	Class	55"	
		Measured	54.6" / 138.7cm	
	Type		IPS	
	Resolution		1920*1080	
	Pixel Pitch (mm)		0.63mm(H) * 0.63mm(V)	
	Active Display Area		1209.6 * 680.4mm	
	Brightness(Typ.)		Max 700 nit	
	Contrast Ratio (Typ.)		1100:1	
	Viewing Angle(H/V)		178/178	
	Response Time (G to G)		8ms	
	Display Colors		8 bit - 16.7M	
	Color Gamut		72%	
	Operation Hour		24/7	
	Haze		28%	
Display	Dynamic C/R		30,000:1	
	H-Scanning Frequency		57.3kHz ~ 70kHz	
	V-Scanning Frequency		48Hz ~ 75Hz	
	Maximum Pixel Frequency		78MHz	
Sound	Speaker Type		N/A	
Connectivity	INPUT	RGB	DVI-D, Display Port 1.2	
		VIDEO	HDMI 2.0 (2)	
		HDCP	HDCP 2.2	
		AUDIO	Stereo mini Jack	
		USB	Only F/W upgrade	
	OUTPUT	RGB	DP1.2(Loop-out)	
		VIDEO	N/A	
		AUDIO	Stereo mini Jack	
		Power Out	N/A	
	EXTERNAL CONTROL		RS232C(in/out), RJ45	
	EXTERNAL SENSOR		Detachable type(IR)	
Tuner		N/A		
Power	Type		Internal	
	Power Supply		AC 100 - 240 V- (+/- 10 %), 50/60 Hz	
	Power Consumption	Max[W/h]		270
		Typical[W/h]		153
		BTU(Max)		921
		Sleep mode		less than 0.5W
		Off mode		less than 0.5W
Mechanical Spec	Dimension(mm)	Set	1211.0 x 681.7 x 69.9	
		Package	1414.0 x 844.0 x 257.0	
	Weight (kg)	Set	16.8kg	
		Package	25.1kg	
	VESA Mount		600 * 400 (mm)	
	Protection Glass		N/A	
Stand Type		N/A		
Operation	Bezel Width (Top/Side/Bot) (mm)		0.44mm (Even)	
	Operating Temperature		0°C - 40°C	
	Humidity		10-80%	
Feature	Key		Razor Narrow Bezel	
	Special		ACM Support(Advanced Color Management), Auto Source Switching & Recovery, Haze 28%, Temperature Sensor, RS232C/RJ45 MDC, Plug and Play (DDC2B), Video Wall(15x15(OSD)), Video Wall Daisy Chain(10x10), Pivot Display, Image Rotation, Button Lock, DP 1.2 Digital Daisy Chain(Supporting UHD Resolution, HDCP support), Smart F/W update, Clock Battery(168hrs Clock Keeping), IP5X tested, EMC Class B	
Certification	Safety		UL (USA) : UL 60950-1, CSA (Canada) : CSA C22.2 No. 60950-1, TUV (Germany) : EN60950-1, NEMKO (Norway) : EN60950-1, KC (Korea) : K60950-1, CCC (China) : GB4943.1-2011, PSB (Singapore) : IEC60950-1, GOST (Russia) : IEC60950-1, EN55022, SIQ (Slovenia) : IEC60950-1, EN55022, PCBC (Poland) : IEC60590-1, EN55022, NOM (Mexico) : NOM-019-SCFI-1993, IRAM (Argentina) : IEC60950-1, SASO (Saudi Arabia) : IEC60950-1	
	EMC		FCC (USA) FCC Part 15, Subpart B class B, CE (Europe) EN55022, EN55024, VCCI (Japan) VCCI CISPR32:2016, KCC (Korea) : KN32, KN35, BSMI (Taiwan) : CNS13438 (CISPR22), C-Tick (Australia) : AS/NZS CISPR32:2015, CCC(China) : GB9254-2008, GB17625.1-2012	
	IP rating		IP5X	
	Environment		N/A	
Accessories	Included		Quick Setup Guide, Warranty Card, DP cable, stereo to DB9 cable, Power Cord, Remote Controller, Batteries, External IR	
	Optional	Stand	N/A	
		Mount	WMN-55VD	
		Specialty	N/A	
Media Player Option Type		Signage player box		

About Samsung Electronics Co., Ltd.

Samsung Electronics Co., Ltd. inspires the world and shapes the future with transformative ideas and technologies. The company is redefining the worlds of TVs, smartphones, wearable devices, tablets, cameras, digital appliances, medical equipment, network systems, and semiconductor and LED solutions. For the latest news, please visit the Samsung Newsroom at news.samsung.com.

SMART Signage

For more information about Samsung Color Expert LED, visit www.samsung.com/business or www.samsung.com/displaysolutions

Copyright © 2019 Samsung Electronics Co. Ltd. All rights reserved. Samsung is a registered trademark of Samsung Electronics Co. Ltd. Specifications and designs are subject to change without notice. Non-metric weights and measurements are approximate. All data were deemed correct at time of creation. Samsung is not liable for errors or omissions. All brand, product, service names and logos are trademarks and/or registered trademarks of their respective owners and are hereby recognized and acknowledged.

Samsung Electronics Co., Ltd.
416, Maetan 3-dong, Yeongtong-gu, Suwon-si, Gyeonggi-do 443-772, Korea

2019-12